



**Resources Safety & Health**  
Queensland

Resources Safety and Health Queensland Summary  
report regarding the death of Adam Malone at  
Jacks Quarry on 29 July 2018

*Mining and Quarrying Safety and Health Act 1999*

This publication has been compiled by Resources Safety and Health Queensland

© State of Queensland, 2021

The Queensland Government supports and encourages the dissemination and exchange of its information. The copyright in this publication is licensed under a Creative Commons Attribution 4.0 International (CC BY 4.0) licence.

Under this licence you are free, without having to seek our permission, to use this publication in accordance with the licence terms.



You must keep intact the copyright notice and attribute the State of Queensland as the source of the publication. Note: Some content in this publication may have different licence terms as indicated.

For more information on this licence, visit <https://creativecommons.org/licenses/by/4.0/>.

The information contained herein is subject to change without notice. The Queensland Government shall not be liable for technical or other errors or omissions contained herein. The reader/user accepts all risks and responsibility for losses, damages, costs and other consequences resulting directly or indirectly from using this information.

Interpreter statement:

The Queensland Government is committed to providing accessible services to Queenslanders from all culturally and linguistically diverse backgrounds. If you have difficulty in understanding this document, you can contact us within Australia on 13QGOV (13 74 68) and we will arrange an interpreter to effectively communicate the report to you.

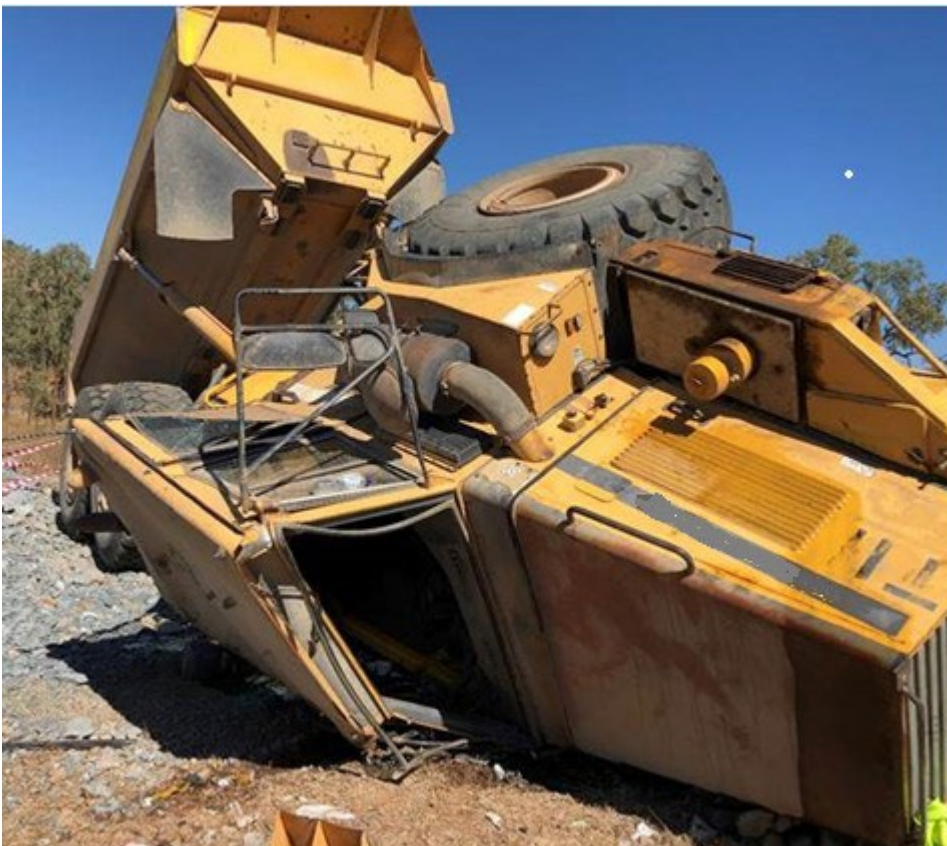
## Summary

This report is a summary of the Resources Safety and Health Queensland (RSHQ) investigation into the death of Adam Malone at Jacks Quarry ("the quarry"), South of Collinsville on 29 July 2018.

Mr Malone was 25 years old and had commenced employment with the quarry operator on 11 June 2018. Conditions at the quarry that day were clear and fine. On the day of the accident he had commenced his shift at 6:00am, along with a number of other quarry workers. Mr Malone's duties for the day involved him operating an articulated dump truck ("the ADT"). He was the only worker to use the ADT that day and he had been tasked to transport rock to various locations across the quarry. The route he was required to travel included a steep ramp.

At approximately 4:40pm, Mr Malone embarked on his final run for the day. Mr Malone departed the loading area after the ADT had been loaded with rock. Whilst travelling down the haul road he lost control of the ADT, resulting in the ADT gathering speed before hitting an embankment, overturning and spilling its load. Mr Malone was partially ejected from the cab and became pinned under the overturned ADT.

Mr Malone died from injuries he sustained as a result of the accident.



*1 Articulated dump truck after the incident.*

## The investigation

An investigation was carried out by the Mining Inspectorate to determine the nature and cause of the accident. The investigation included:

- Inspecting the scene of the incident, taking photographs and video recordings.
- Accompanying the Forensic Crash Unit and Vehicle Inspection Unit of the Queensland Police Service (“the QPS”) during their investigation.
- Exercising powers to obtain documentary evidence, including Safety and Health Management System documents, from the site.
- Reviewing documentary evidence obtained during the investigation.
- Conducting interviews with workers on site at the time of the incident and persons associated with the maintenance of the truck.
- Engaging experts for the purpose of carrying out testing associated with the braking system of the ADT, and to provide a report.

Prosecutions were commenced following the investigation and proceeded to a trial before the Industrial Magistrates Court. Both defendants were acquitted in relation to all charges against them.

## Purpose

It is RSHQ’s belief that sharing information relating to fatalities and incidents on mine and quarry sites plays an important role in ensuring continuous improvement in mine safety and health. A safety alert was issued one month after the accident occurred and provided initial recommendations to industry.

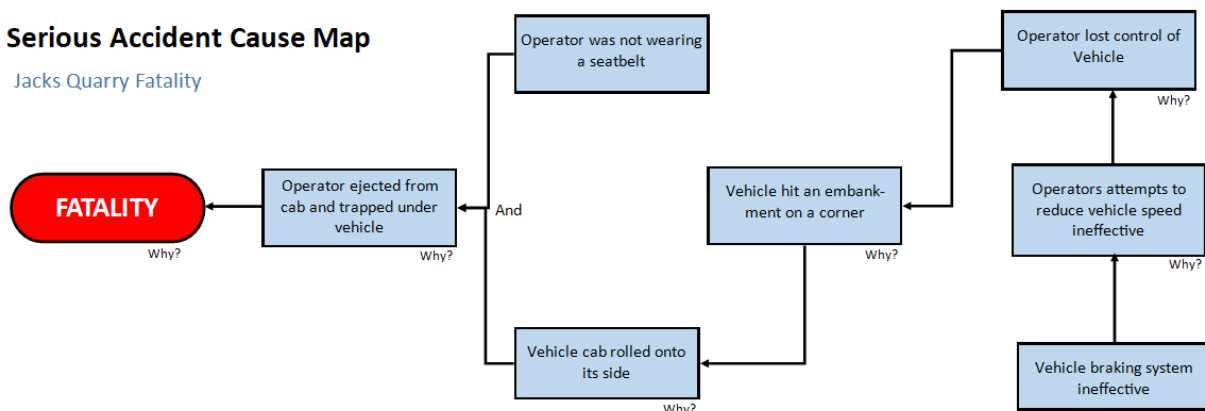
This further report has been published with the purpose of:

- providing everyone who works with mines and quarries — owners, operators, supervisors, workers, and suppliers — with an understanding of the events that resulted in the death of Mr Malone; and
- sharing information about why the accident occurred and what can be done to reduce the likelihood of a similar accident occurring again.

# Cause Map

## Serious Accident Cause Map

Jacks Quarry Fatality



## Key Reminders to Industry

Single vehicle accidents continue to be one of the most common incidents reported by mines and quarries across Queensland. The *Mining and Quarrying Safety and Health Act 1999* (“the Act”) and the *Mining and Quarrying Safety and Health Regulation 2017* (“the Regulation”) imposes obligations on operators of mines and quarries, statutory officials and workers to ensure risk is managed to an acceptable level at all times.

Given the prevalence of single vehicle accidents and the very serious consequences that can eventuate, including the death of workers and workers sustaining serious injuries, everyone involved in the operation of vehicles at mines and quarries should be aware of their obligations and the role they play in ensuring risk to workers is managed to an acceptable level.

In particular:

- Operators and SSEs must ensure mobile plant in use at mines and quarries is serviced and maintained so the plant is capable of safely performing its intended functions and remains within the condition and performance limits of its specifications. Mobile plant that cannot be serviced and maintained to the above standard must be taken out of service.<sup>1</sup>
- SSEs must ensure records are kept about mobile plant in use at mines and quarries. This includes records about the mobile plants’ use, service and maintenance history, repairs

---

<sup>1</sup> refer to obligation at s.109 of the Regulation

and modification, and inspection testing and monitoring, and any action taken as a result of the inspection, testing and monitoring. Records must be kept whilst the plant is in use at the mine or quarry and must be available to, and readily accessible by, each worker using the plant.<sup>2</sup>

- SSEs must ensure mobile plant used at mines and quarries has written specifications and instructions for use. SSEs must ensure the specifications and instructions are available to, and readily accessible by, each worker required to use the mobile plant and carry out the activities to which the instructions relate.<sup>3</sup>
- SSEs must ensure written specifications and instructions for use for mobile plant. The specifications must include the knowledge and competency requirements for persons responsible for operating, monitoring, servicing and maintaining the mobile plant.<sup>4</sup> Workers who do not hold the required knowledge and competency requirements should not be permitted to operate, monitor, service or maintain the mobile plant.
- A copy of the OEM operators' manual should be available for reference by workers when they are operating plant.<sup>5</sup>
- Mobile plant must incorporate appropriate engineering controls to protect the plant operator and other persons.<sup>6</sup> This includes ensuring seatbelts are fitted and in a serviceable condition at all times. In addition, SSEs must ensure adequate induction and training is provided to ensure workers operating mobile plant are aware of risks arising from not wearing a seatbelt whilst operating mobile plant. SSEs should also ensure they are able to monitor seatbelt usage across their operations, including by ensuring adequate and effective supervision of workers and operations at all times.
- Any person responsible for managing risk in relation to monitoring mobile plant, must monitor its use, condition and performance to detect any deterioration causing an unacceptable level of risk and decide if the plant is likely to operate without causing an unacceptable level of risk until the plant is next monitored and provide information for preventative maintenance. The responsible person must ensure an appropriate level of monitoring is carried out during mobile plant's use.<sup>7</sup>

---

<sup>2</sup> refer to obligation at s.113 of the Regulation

<sup>3</sup> refer to obligation at s.112 of the Regulation

<sup>4</sup> refer to obligation at s.112(2) and (3) of the Regulation

<sup>5</sup> refer to obligation at s.112 of the Regulation

<sup>6</sup> refer to obligation at s.110(1)(b)(iii) of the Regulation

<sup>7</sup> refer to obligation at s.108 of the Regulation

## Links to safety alerts and bulletins

Safety Alert 358: [Fatality involving an articulated dump truck](#)

Safety Bulletin 182: [Engineering and maintenance of mobile plant braking systems](#)

## Contact

This report is a brief outline of the events around Mr Malone's fatal accident. If you require more information, please contact the Chief Inspector by email:

[rshqmmq.corro@rshq.qld.gov.au](mailto:rshqmmq.corro@rshq.qld.gov.au)

## General enquiries

- Contact the general enquiries numbers or your local Mines Inspectorate office.
- 13QGOV (13 74 68) within Australia
- +61 7 3328 4811 (+10 hours UTC) international callers

## Mines Inspectorate head office

Head office GPO Box 1321, Brisbane Qld 4001

Level 19, 275 George Street, Brisbane Qld 4000

Phone: (07) 3199 8001